

# SOUND OF THE UNIVERSE

written, arranged and produced by PIT ALBRECHT 2015

## 1. Movement C-Major/SATZ 1 C-Dur

(dt. Titel "Sinfonie des Universums")

### I. EPISODE

THE BIG BANG: Bar 1 - 6

EMERGENCE OF THE ELEMENTAL FORCES: Bar 6 - 39  
(symbolize gravity)

ARISE OF THE STARS: Bar 40 - 52

EMERGENCE OF GALAXIES: Bar 54 - 87

DANCE OF SKY PHENOMENA: Bar 88 - 120

BIRTH AND DEATH OF THE STARS: Bar 121 - 135

THE BALANCE OF THE UNIVERSE: Bar 136 - 179

### INSTRUMENTATION

1) BRASS - Bb (Soloinstrument: Horn)

2) WOODWINGS - Hb (Soloinstrument : Flute)

3) VIOLIN 1 - Vio 1

4) VIOLIN 2 - Vio 2

- VIOLIN 2 AND FLUTE

5) FULL ORCHESTRA - Orch:

- VIOLIN, HORNS AND TRUMPETS (as notated)

- FLUTES AND CLARINETS (up-octave *8va*)

- BASS AND TUBA (down-octave *8vb*)

6) BASS (Contrabass)

7) PERCUSSION:

- BIG DRUM - Pk, DRUMS AND CARILLON - Gls

CYMBALS - Bck

### I. ABLAUF

Der Urknall: Takt 1 - 6

Erscheinen der Urkräfte: Takt 6 - 3  
(Horn symbolisiert die Gravitation)

Entstehen der ersten Sterne: Takt 40 - 52

Galaxien erscheinen: Takt 54 - 87

Tanz der Himmelserscheinungen: Takt 88 - 120

Geburt und Tod der Sterne: Takt 121 - 135

Die Balance des Universums: Takt 136 - 179

### INSTRUMENTIERUNG

1) Blechbläser - Bb (Soloinstrument: Horn)

2) Holzbläser - Hb (Soloinstrument: Flöten)

3) Violine 1 - Vio 1

4) Violine 2 - Vio 2

- Violine 2 und Flöte

5) Orchester Satz - Orch

- Violinen, Hörner und Trompeten (wie in Notation)

- Flöten und Clarinetten (Oktavierung nach oben *8va*)

- Bass und Tuba (Oktavierung nach unten *8vb*)

6) Bass (Kontrabass)

7) Schlaginstrumente:

- Pauken - Pk, Trommeln und Glockenspiel - Gls

- Becken - Bck

# MOVEMENT 1 → Satz 1

**C - Major → C - Dur**

"Sound of the Universe" (dt. Sinfonie des Universums)

written, arranged and produced 2015 by  
Pit Albrecht

**Andante**  
etwa 82 Bpm

*largo*

PREVIEW

5 Pages

ORDER

FULL SCORE:

**pit@musicmilerecords.de**

available as Hardback Edition A4 Landscape Format or PDF

VORSCHAU

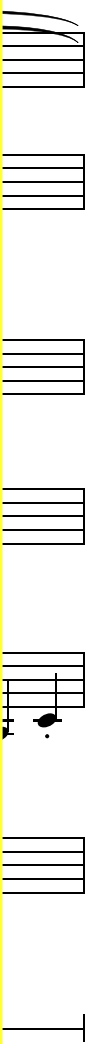
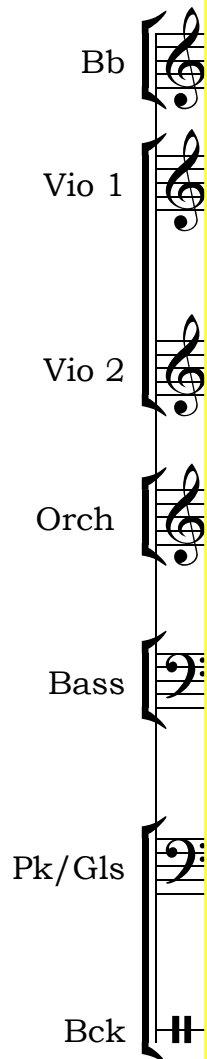
5 Seiten

Bestellung

der ganzen Partitur:

**pit@musicmilerecords.de**

erhältlich gebunden im DIN A4 Querformat oder als PDF



10

Bb

Bass

Pk/Gls



18

Bb

Vio 1

Bass

Pk/Gls

*mf*

*mf*

*mf*

26

Bb

Hb

Vio 1

Vio 2

Bass

Pk/Gls

*f*

*f*

*f*

und Flöte

*f*

*f*

*f*

Detailed description: This page of a musical score contains measures 26 through 31. It features six staves: Bb (Bassoon), Hb (Clarinet in Bb), Vio 1 (Violin I), Vio 2 (Violin II), Bass (Double Bass), and Pk/Gls (Percussion/Glenn). The Bb and Hb parts have a dynamic marking of *f* and include slurs. The Vio 1 part also has a dynamic marking of *f*. The Vio 2 part has a dynamic marking of *f* and is labeled 'und Flöte'. The Bass part has a dynamic marking of *f*. The Pk/Gls part is mostly silent, indicated by dashes. The score is written in a common time signature.

34

Blechbläser

Bb

Hb

Vio 1

Vio 2

Orch

Bass

Pk/Gls

Bck

*p*

This musical score page contains measures 34 through 37. The instruments are arranged in a standard orchestral layout. The Blechbläser section includes Bb and Hb. The string section includes Vio 1, Vio 2, Bass, and Pk/Gls. The Bck part is at the bottom. Measure 34 features a melodic line in the Bb and Hb parts, with a slur over the first two measures. Vio 1 has a similar slur and a dynamic marking of *p* starting in measure 36. Vio 2 has a slur over the first two measures. The Bass part has a steady eighth-note accompaniment. The Pk/Gls part has a few notes in measures 34 and 35. The Bck part has a few notes in measures 34 and 35.